



PS2000 general description

PS2000 is an atmospheric submarine for two persons, with a manipulator device to work under water.

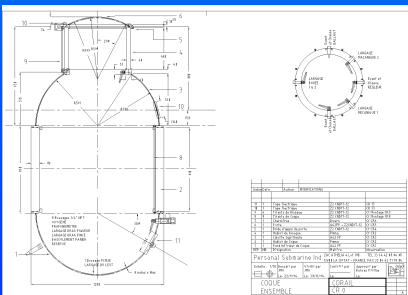
Special tools and instruments are proposed for specific missions as :
 - Video records on pipe or cable laying and mapping.- Video records and 3D mapping of archeological survey.- Coral fishing.

His autonomous propellers give him a 3 Knots cruise speed during 5 hours. For observation with slow cruise speed, his autonomy is up to 12 hours.

Price ex work France: 517 500 € (without robotic and navigation system)

Certified by BV

PS2000 © ®™ Two Seats Underwatercraft



Main data on the PS2000

Length	3200 mm
Width	2500 mm
Height	2700 mm
Draught	1700 mm
Freeboard of the hatch	800 mm
Weight in Air	3500 kg
Drop weight	120 kg
Crew & equipment weight	200 kg
Half full speed autonomy	4 hours
Emergency life support	72 hours
Max forward speed	3 knots
Max towing speed	5 knots
Max sea state for towing	3
Operating depth	200 meters

PSI—WADECO : Water Design Concept -
Ship Yard: 19 B Zac Athelia 13600 LA CIOTAT— FRANCE
R&D Department : 195 rue du Lauzard - 13300 SALON DE PROVENCE
Mail wadeco@free.fr Mobile 33 (0)616250302 Phone 33 (0)490537596